

NEO CRUCIBLE

3D Printers for Industry

Creality CR-3040 Pro

Industrial Grade FDM 3D Printer

Print Volume
36,000 cm³



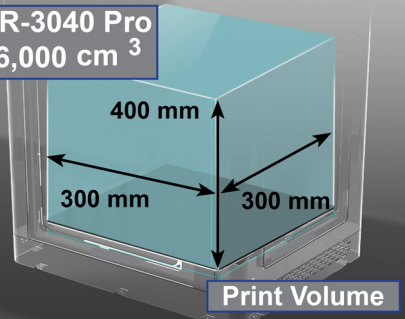
Industrial Grade Customer Support

- Warranty & Repair Support
- Replacement Parts in Stock
- Technical Support & Consulting

Industrial Grade Material Capabilities

- Fully Enclosed for Temperature Stability
- Max Hotbed Temperature: 110°C (230°F)
- High Temperature Nozzle: **280°C** (536°F)
- Designed for PLA, ABS, PETG, PC, Nylons

CR-3040 Pro
36,000 cm³



Print Volume

Max Print Volume

36,000 Cubic cm (cm³) (9160 Cubic Inches)

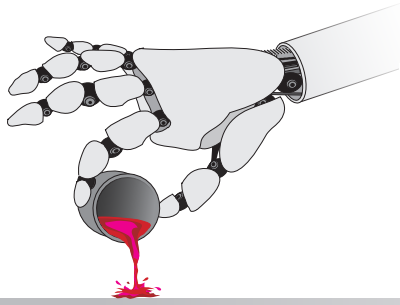
- X Dimension: 300 mm (11.8 Inches)
- Y Dimension: 300 mm (11.8 Inches)
- Z Dimension: 400 mm (15.7 Inches)

Industrial Grade Applications

- What ifs...
- Prototypes
- Test Fixtures
- Production Fixtures
- Concept Justification
- Packaging Evaluations
- Product Shape Alternatives
- Finished Goods Production

Under
\$2,000
Ask for a
Quote
sales@neocrucible.com





NEO CRUCIBLE

3D Printers for Industry
A Division of Lodestone Group

CR-3040 Pro Specifications

- File Transfer via SD Card
- Master Process Chip: ATMEGA 2560
- Whisper Quiet for Office Environments
- Power Loss-Recovery ● Filament Run-Out Sensor
- 4.3 Color Touch Screen ● Touch Auto Bed Leveling
- Power Supply Rating: 115/230 Volts AC - 24 Volts - DC-900W
- Printer Size: 580 x 470 x 885 mm (22.8 x 18.5 x 34.8 Inches)
- Shipping Carton: 700 x 640 x 1115 mm (27.6 x 25.2 x 43.9 Inches)
- Gross Weight: 63.5 Kg (140 lbs) ● Net Weight: 58.0 Kg (128 lbs)
- Print Nozzle Diameter: 0.4 mm ● Filament Diameter: 1.75 mm
- Max Print Temperature: 280°C ● Max Hot Bed Temp: 110°C (230°F)
- Layer Thickness: 0.1 to 0.3 mm (.008 inches) ● Print Accuracy: +/- 0.1 mm



Neo Crucible

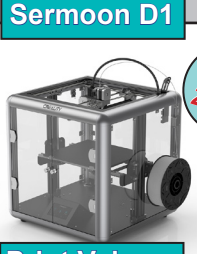
CR-3040 Pro is Engineered for Materials up to 280°C

Filament Characteristics

	Group 1 Filaments		Group 2 Filaments			Group 3 Filaments				
Brand Material	Creality CR-PLA	Creality CR-TPU	Creality CR-PETG	Creality ABS	PolyLite ASA	PolyMax PC	PolyMax PC-FR	PolyMide PC/ABS	PolyMide Nylon 6/6	PolyMide PA6-GF
Description	Versatile	Flexible	Versatile	Strong	Strong	Useful	Special	Tough	Tough	Tough
Colors	Many	Many	Many	Some	Some	Limited	Limited	Limited	Limited	Gray
Ease of Use	9	8	7	6	5	5	5	5	5	4
Print Temp	>190°C	>210°C	>230°C	>250°C	>250°C	>260°C	<260°C	>260°C	>280°C	>280°C
Durability	4	7	5	4	3	9	8	10	8	10
Heat Resist	3	2	6	7	7	8	8	8	9	10
Rigidity	5	1	5	6	7	7	9	7	7	10
Weather	3	7	4	4	9	5	5	5	4	4
						Reinforced	UL94-VO	Blend		Glass Fill

Creality Pro Line-Up


Ask for Volume Discounts



Sermoon D1

Up To 250°C

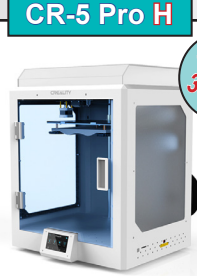
Print Volume 22,568 cm³



CR-5 Pro

Up To 260°C


Print Volume 25,650 cm³



CR-5 Pro H

Up To 300°C

Print Volume 25,650 cm³



CR-5060 Pro

Up To 300°C

Print Volume 150,000 cm³